



Windsor Industrial Park

2105/2117 Windsor Street
Abbotsford BC | V2T 6L9

**Brand New Industrial Units
For Lease with Grade Loading**

Marty Peters, CIPS
Personal Real Estate Corporation
DIRECT: 604.308.2931
Marty@cdwandassociates.com

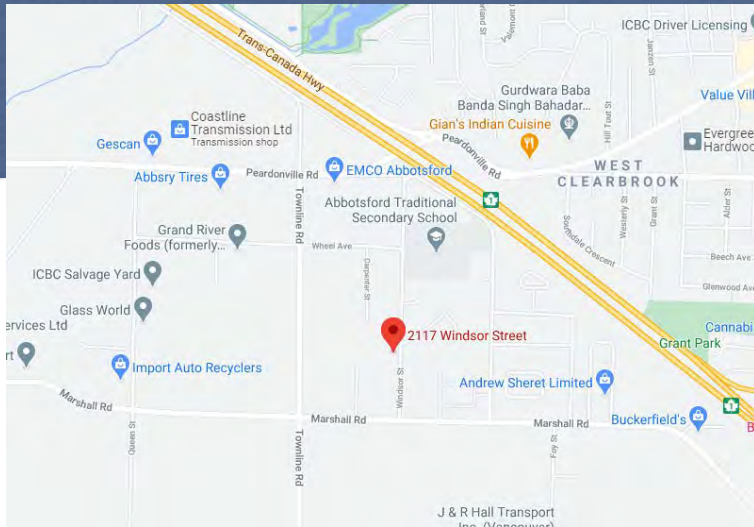
Charles D. Wiebe, CIPS, E.Tech
Personal Real Estate Corporation
DIRECT: 778.549.8555
Charles@cdwandassociates.com

RE/MAX & ASSOCIATES
COMMERCIAL[®] COMMERCIAL REAL ESTATE

www.cdwandassociates.com

Windsor Industrial Park

2105/2117 Windsor Street
Abbotsford BC

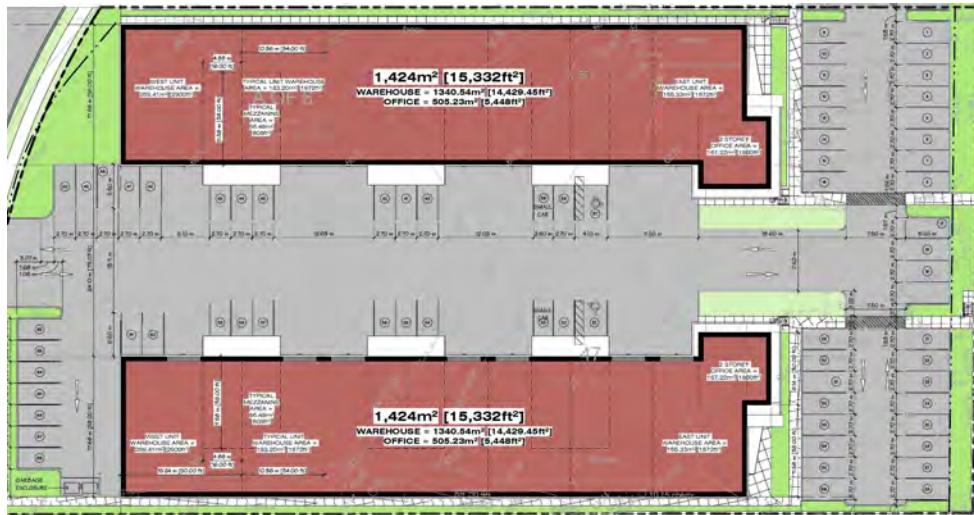


Opportunity

CDW & Associates is pleased to present the opportunity to lease brand new warehouse units in Windsor Industrial Park, only minutes away from Highway 1 and the Abbotsford International Airport. Ranging in size from 1,972 SF to 49,096 SF, this complex is scheduled for completion in Quarter 4 of 2021.

Building Features

- For Lease Rates please call Listing Agents
- Additional Rent \$3.75 (estimated 2021)
- Grade loading doors, 14' x 12' with every unit
- 26' ceiling clearance, 30' total height
- 3 Phase 200 amp electrical service
- Pre-engineered for 2nd floor mezzanine level
- Units will be shell condition
- Multiple ingress & egress points
- Concrete tilt-up construction
- 68 total parking stalls with wheelchair accessibility



The information contained herein has been obtained through sources deemed reliable by CDW & Associates - RE/MAX Little Oak Realty, but cannot be guaranteed for its accuracy. We recommend to the buyer that any information which is of special interest should be obtained through independent verification. ALL MEASUREMENTS ARE APPROXIMATE.



MARTY PETERS, CIPS
PREC - Commercial REALTOR
604-308-2931 (Mobile)
marty@cdwandassociates.com
www.cdwandassociates.com



CHARLES D. WIEBE, CIPS, E. TECH
PREC - Commercial REALTOR
778-549-8555 (Mobile)
charles@cdwandassociates.com
www.cdwandassociates.com