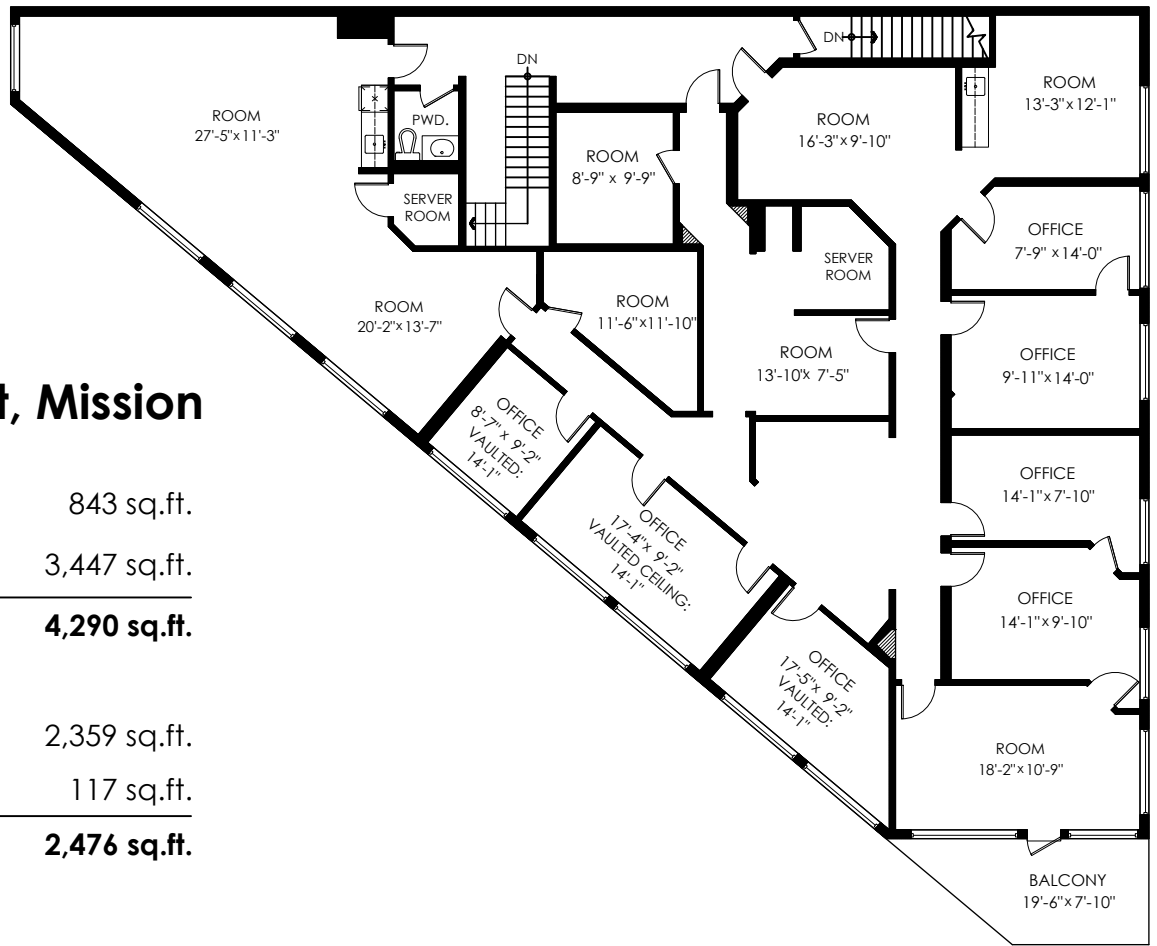


Main Floor Plan

Floor Area: 3447 sq.ft.
Ceiling Height: 7'-9"

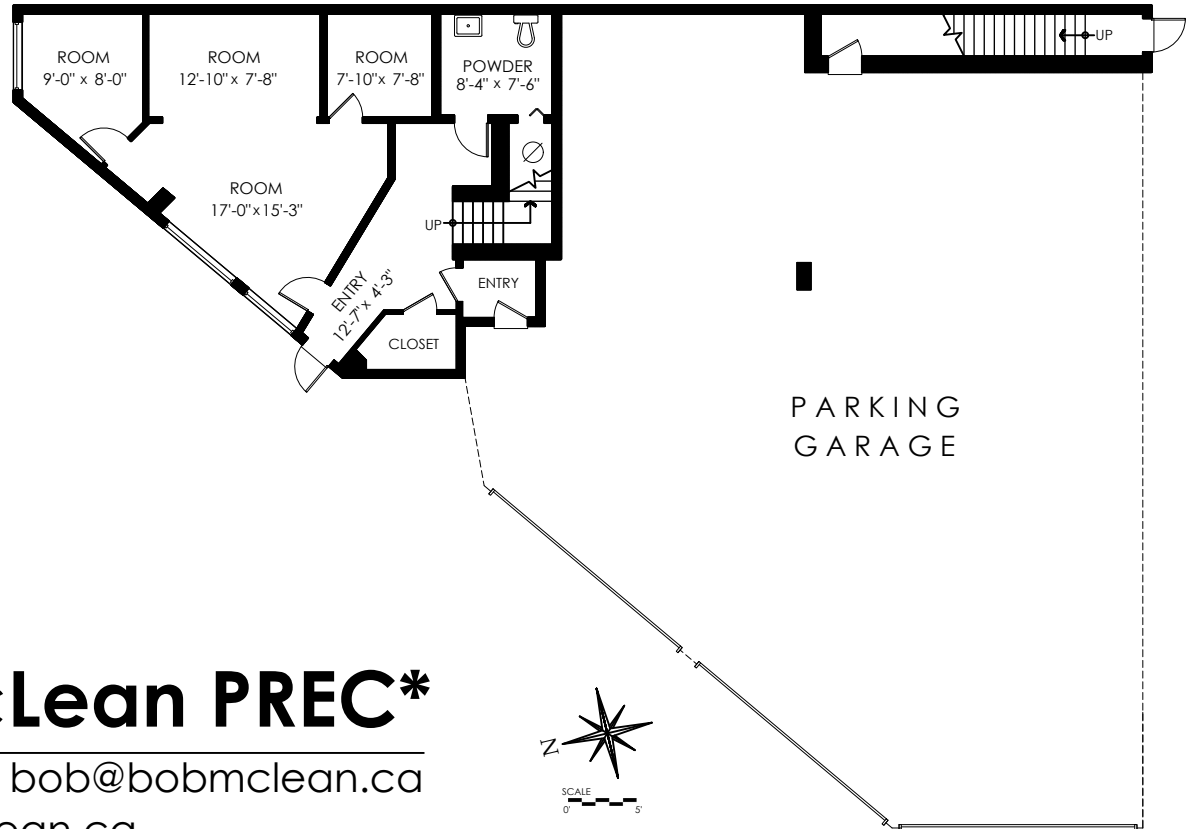


7101 Horne St, Mission

Entry Floor:	843 sq.ft.
Main Floor:	3,447 sq.ft.
Total:	4,290 sq.ft.
Parking Garage:	2,359 sq.ft.
Balcony:	117 sq.ft.
Total Extras:	2,476 sq.ft.

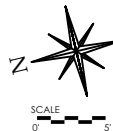
Entry Floor Plan

Floor Area: 843 sq.ft.
Ceiling Height: 8'-6"



Bob McLean PREC*

604-302-0177 bob@bobmclean.ca
www.bobmclean.ca



Measuring, Scanning, Design & Permits | 604-876-3738

7107 Horne Street, Mission

Unit Area: 4,290 sq.ft.

Date: 2018-08-24

SQFT based on interior measurements, not taken from original blueprints. Demising walls assumed to be 8.5". SQFT to BOMA Standard for retail ANSI/BOMA Z 65.5.5-2010: SQFT taken to center of demising walls and to ext. line of ext. walls. To the glass line of walls with 50% or more glass. Door setbacks included in sqft. No common area or gross up (if any) accounted for in calculations.

Entry Floor: 843 sq.ft.

Main Floor: 3,447 sq.ft.

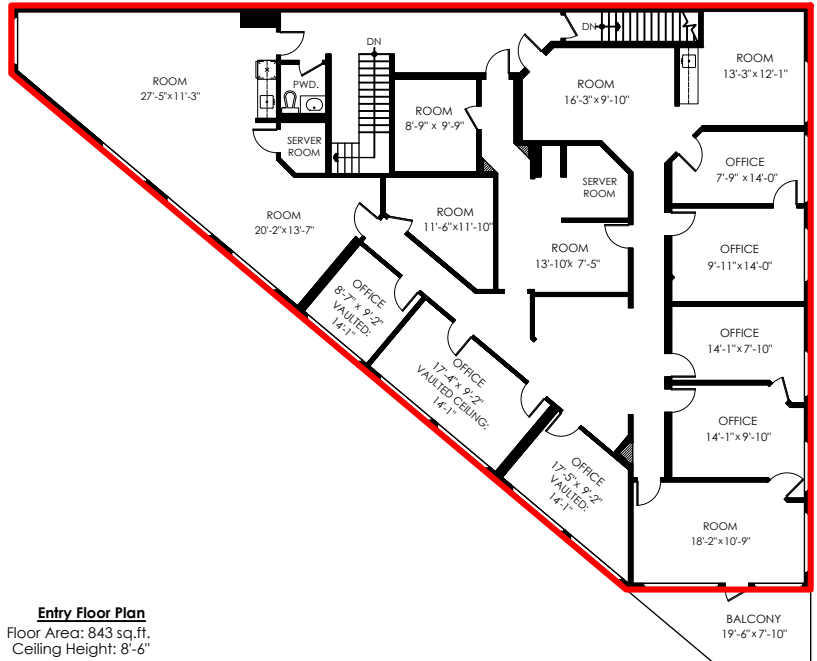
Total: 4,290 sq.ft.

Parking Garage: 2,359 sq.ft.

Balcony: 117 sq.ft.

Total Extras: 2,476 sq.ft.

Main Floor Plan
 Floor Area: 3447 sq.ft.
 Ceiling Height: 7'-9"



Entry Floor Plan
 Floor Area: 843 sq.ft.
 Ceiling Height: 8'-6"

