

# FOR LEASE

984 Bowman Road  
Abbotsford, BC  
V3G 1T1



## WAREHOUSE SPACE AVAILABLE FOR LEASE IN SUMAS PRAIRIE (ABBOTSFORD)

Located in the Sumas Prairie area of Abbotsford, this incredibly well built, brand new warehouse is available for lease. Designated as A2 - Agricultural Two zoning this building has 20, 000 SF of interior space, plus a covered lean-to that is 30' wide and runs almost the entire length of the building, gives you the additional exterior square footage for your storage dreams!

**RE/MAX**  
COMMERCIAL®

RE/MAX Little Oak Realty  
#120-9220 Glover Rd., Langley, BC V1M 2S2  
Office: 604.888.2475 Office Fax: 1.866.551.3410  
RE/MAX Western Canada Commercial Division

**CDW**  
& ASSOCIATES  
CDWandAssociates.com

Charles D. Wiebe, CIPS, E.Tech  
Commercial REALTOR®  
Direct: 778.549.8555  
charles@cdwandassociates.com

Marty Peters, CIPS  
Commercial REALTOR®  
Direct: 604.308.2931  
marty@cdwandassociates.com

## OVERVIEW

### TYPE

Warehouse

### GROSS RATE

\$9.75/SF

### SIZE

14,960 SF Interior

5,040 SF Exterior

### ZONING

A2 - Agricultural Two

### HIGHLIGHTS

- 8 Bay doors of various sizes, located on 3 different sides of the warehouse & 1 inside
- Multiple Bay doors are motorized
- Lots of natural light from windows
- Ample overhead lighting
- 24' ceilings on the inside
- 16' ceilings in the covered lean-to



The information contained herein has been obtained through sources deemed reliable by CDW & Associates - RE/MAX Little Oak Realty, but cannot be guaranteed for its accuracy. We recommend to the buyer that any information which is of special interest should be obtained through independent verification. ALL MEASUREMENTS ARE APPROXIMATE.



RE/MAX Little Oak Realty  
#120-9220 Glover Rd., Langley, BC V1M 2S2  
Office: 604.888.2475 Office Fax: 1.866.551.3410  
RE/MAX Western Canada Commercial Division



CDWandAssociates.com

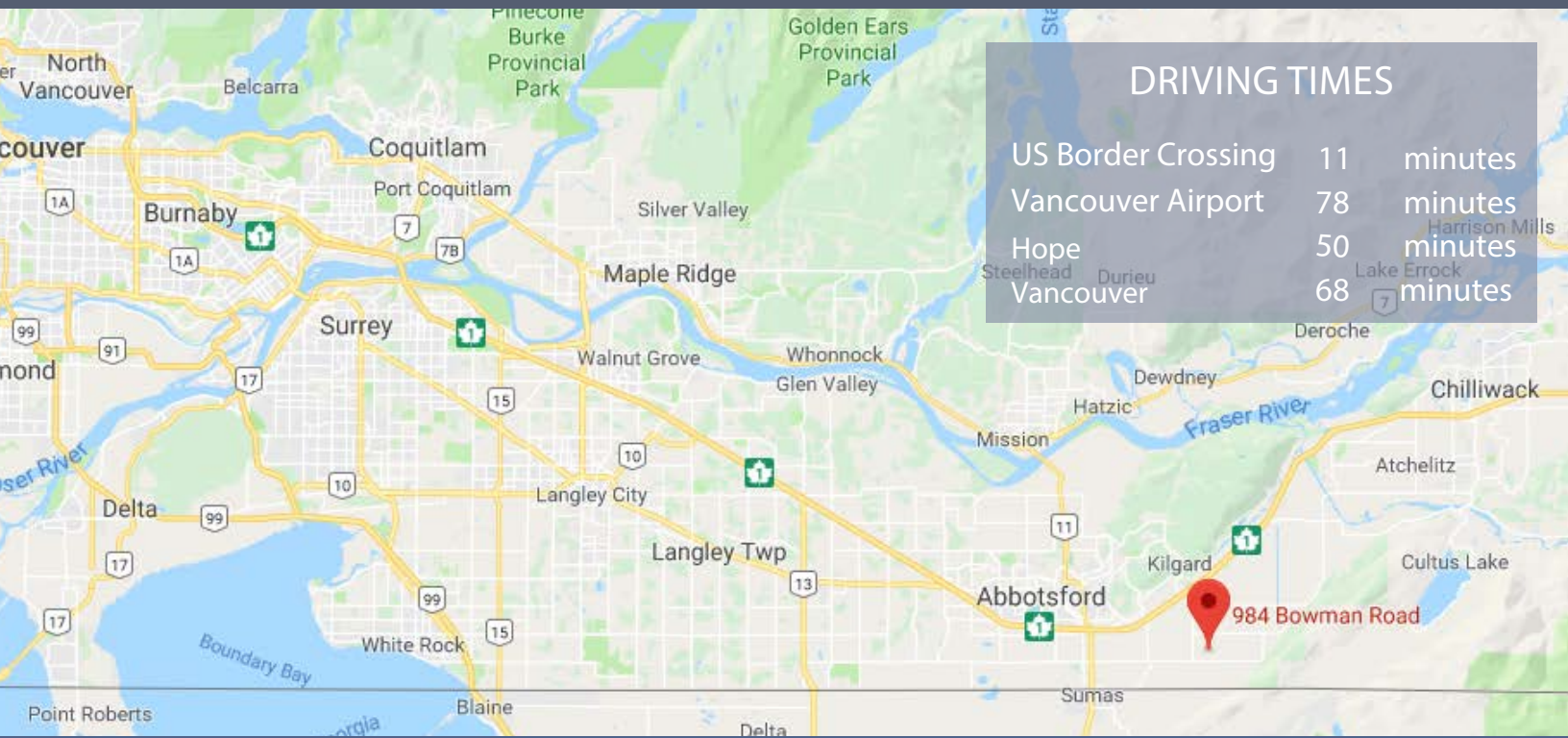
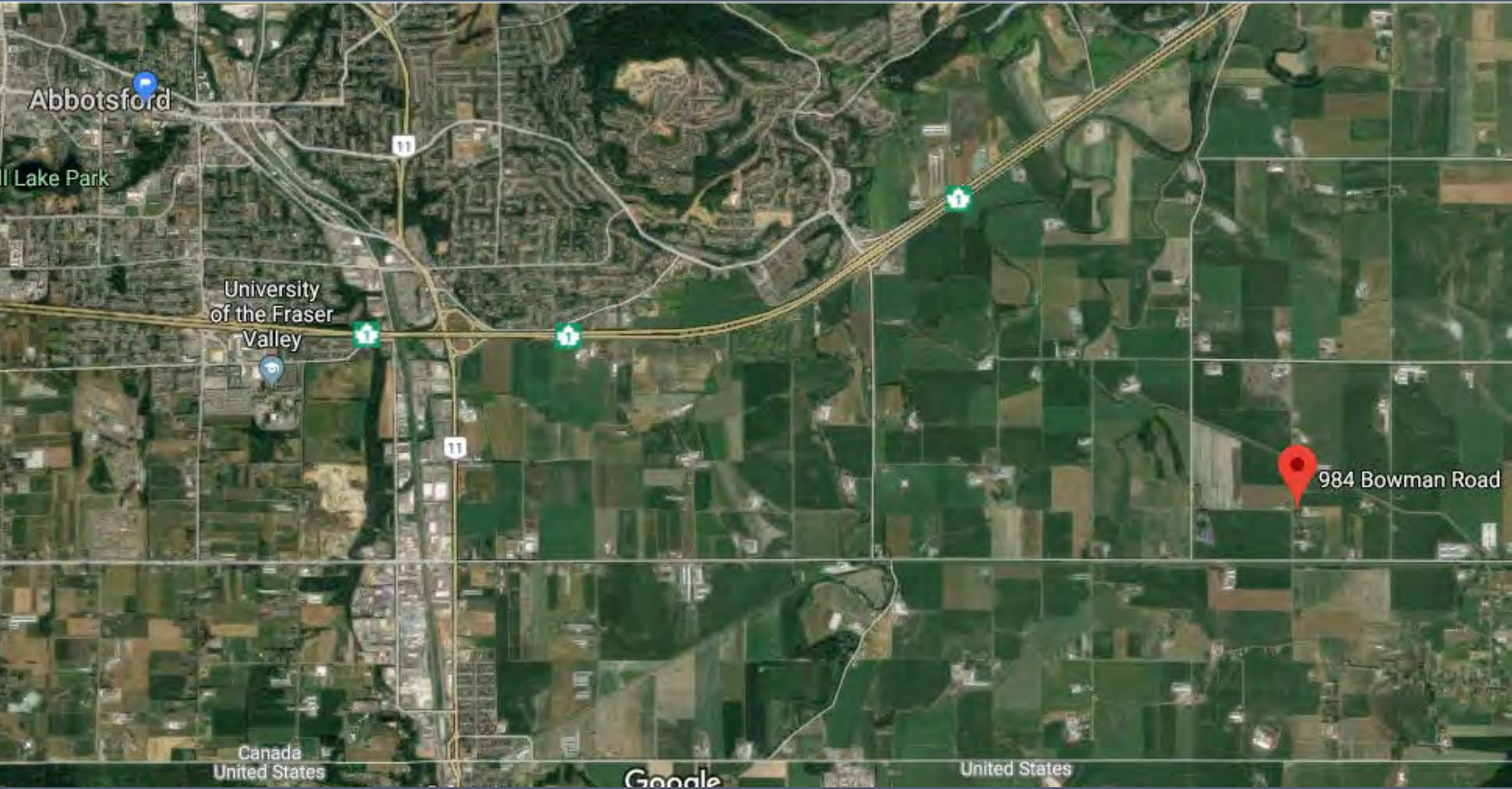
Charles D. Wiebe, CIPS, E.Tech  
Commercial REALTOR®  
Direct: 778.549.8555  
charles@cdwandassociates.com

Marty Peters, CIPS  
Commercial REALTOR®  
Direct: 604.308.2931  
marty@cdwandassociates.com



# FOR LEASE

984 Bowman Road  
Abbotsford, BC  
V3G 1T1



**RE/MAX**  
COMMERCIAL®

RE/MAX Little Oak Realty  
#120-9220 Glover Rd., Langley, BC V1M 2S2  
Office: 604.888.2475 Office Fax: 1.866.551.3410  
RE/MAX Western Canada Commercial Division

**CDW**  
& ASSOCIATES

CDWandAssociates.com

Charles D. Wiebe, CIPS, E.Tech  
Commercial REALTOR®  
Direct: 778.549.8555  
charles@cdwandassociates.com

Marty Peters, CIPS  
Commercial REALTOR®  
Direct: 604.308.2931  
marty@cdwandassociates.com