

FOR LEASE

#6 30465 PROGRESSIVE WAY • ABBOTSFORD • BC



CDW
& ASSOCIATES
COMMERCIAL REAL ESTATE

CHARLES WIEBE, CIPS, E. TECH
COMMERCIAL REALTOR®
778-549-8555
charles@cdwandassociates.com

MARTY PETERS, CIPS
COMMERCIAL REALTOR®
604-308-2931
marty@cdwandassociates.com

cdwandassociates.com

501 - 889 Pender Street, Vancouver, BC

RE/MAX
COMMERCIAL
RE/MAX COMMERCIAL ADVANTAGE

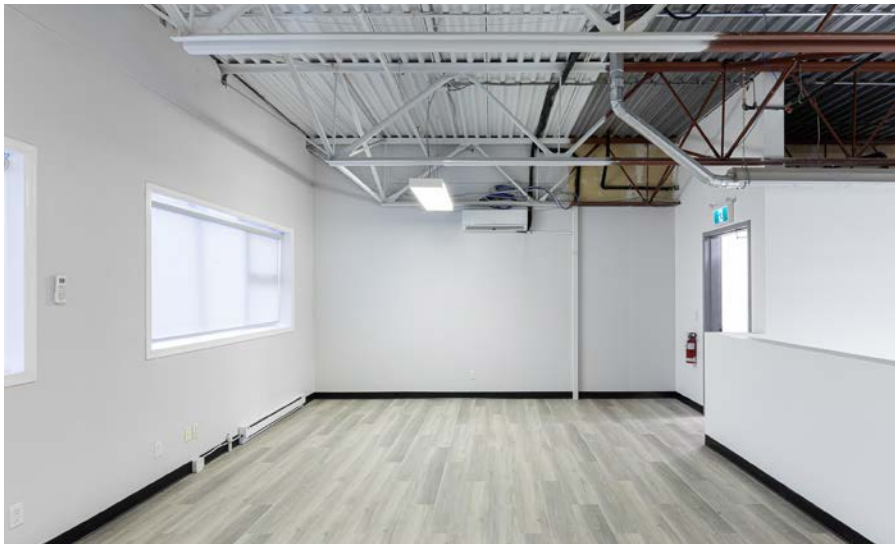


Each office independently owned and operated.





LOCATED JUST OFF MT.LEHMAN ROAD and only minutes away from Highway 1, this warehouse unit is available for immediate possession. Over 1500 SF, this unit offers a reception area at the front of the building, a single washroom with shower and a mezzanine level approximately 300 SF in size with the remaining footprint being warehouse space. A single bay door is located at the back of the building with easy access via Progressive Way and multiple parking stalls directly in front of the unit.



**MIDDLE UNIT
ABBOTSFORD, BC
WAREHOUSE COMPLEX**

1540 SF

**LEASE RATE:
\$18.00/SF**

**ADDITIONAL RENT:
\$6.50/SF**

**AVAILABILITY:
IMMEDIATELY**

**MLS NUMBER:
C8056846**

**ZONING:
I2 - GENERAL INDUSTRIAL
ZONE**

EASILY ACCESSED
WAREHOUSE UNIT

SINGLE BAY DOOR
LOCATED AT BACK
OF BUILDING



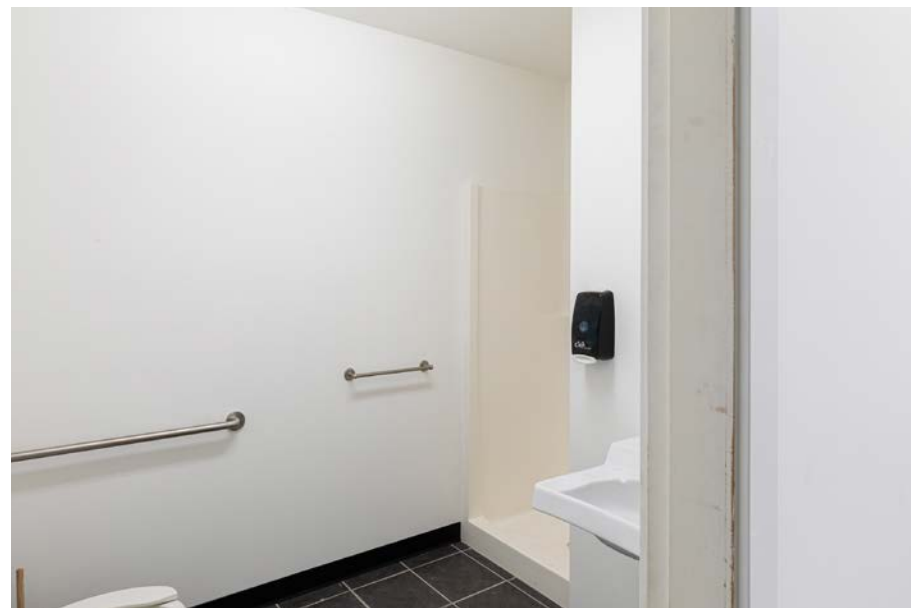
WELL
ESTABLISHED
INDUSTRIAL AREA
LOCATION WITH
EASY ACCESS
VIA MAJOR
ARTERIES

MULTIPLE
PARING SPACES
IN FRONT
OF THE UNIT

SINGLE BAY
DOOR
AT REAR OF
BUILDING



The information contained herein has been obtained through sources deemed reliable by CDW & Associates - RE/MAX Commercial Advantage, but cannot be guaranteed for its accuracy. We recommend to the buyer that any information which is of special interest should be obtained through independent verification. ALL MEASUREMENTS ARE APPROXIMATE.



DIRECT ROUTE FROM
HWY 1 (TRANS-CANADA)
VIA
MT. LEHMAN
OVERPASS
SOUTH TO
PROGRESSIVE WAY

CDW



#6 30465
PROGRESSIVE WAY



MT. LEHMAN OVERPASS



TRANS CANADA HIGHWAY (HWY 1)

CLEARBROOK ROAD OVERPASS



CDW & ASSOCIATES COMMERCIAL REAL ESTATE

CHARLES WIEBE, CIPS, E. TECH

COMMERCIAL REALTOR®

778-549-8555

charles@cdwandassociates.com

MARTY PETERS, CIPS

COMMERCIAL REALTOR®

604-308-2931

marty@cdwandassociates.com

